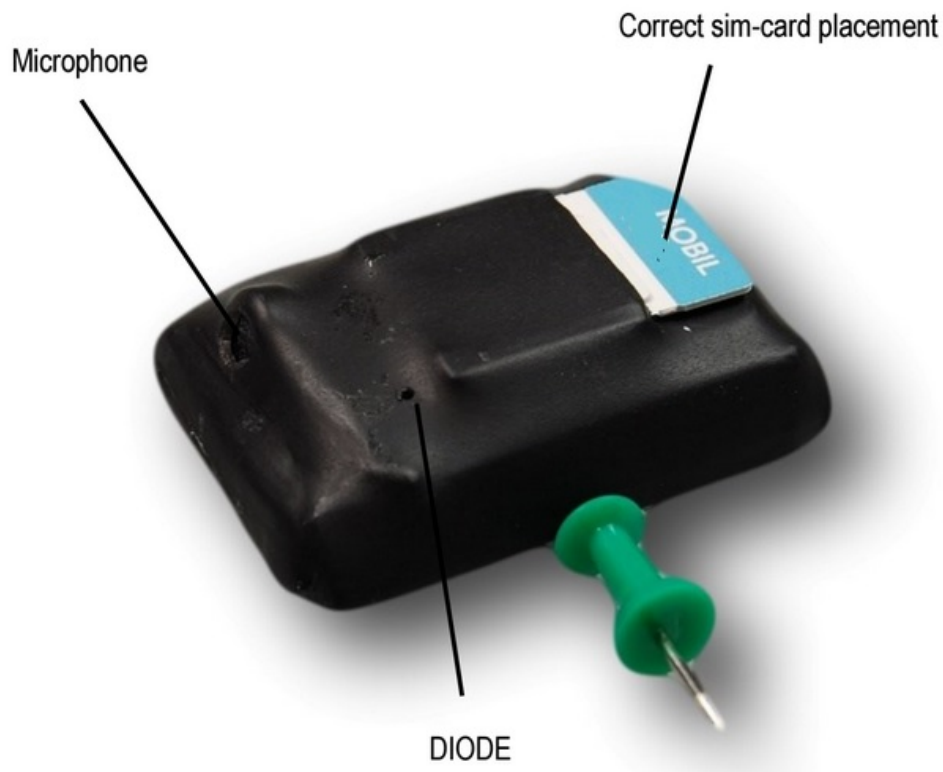


USER MANUAL: **ONGLIVE SERIES**



ONGLIVE Series are **professional listening devices** that are developed for long-term standby usage. They are equipped with HQ microphones and built-in batteries.

There are different variations of the series which is equipped with same module, therefore please have a **look at your packaging**, in order to see how long will yours last. The starting version is LongLife 10 which lasts for 10 days.

LONGLIVE SERIES:

„LONGLIVE 10“ - Battery life up to 10 days



„LONGLIVE 10+“ Battery life up to 10 days + EXTENDED microphone



„LONGLIVE 20“ Battery life up to 20 days



„LONGLIVE 20+“ Battery life up to 20 days + EXTENDED micro-



„LONGLIVE 60“ Battery life up to 60 days



QUICK SET-UP GUIDE:

IMPORTANT:

- DEVICE CHARGES **WITH SIMCARD** INSIDE ONLY
- IT WAS **NOT DEVELOPED** FOR 220v CONTINUOUS USAGE
- CALLBACK FUNCTION **ACTIVATION SMS „1111“** and **DEACTIVATION SMS 0000**
- IF THE BATTERY IS COMPLETELY DISCHARGED IT **TAKES UP TO 3 MINUTES TO START CHARGING**

DIODE FLASHING SIGNALS:

- PUT SIMCARD IN: 3x flashes
- PUT CHARGER IN : Continuous red light until battery is full
- LOW BATTERY: Constant blinking

STEP 1

SETTING UP

PLUG in the device with the **SIMCARD inside** and wait for it to charge. The device is charging when the **red diode** is on. Device takes **several hours to charge**, depending on your battery capacity.

STEP 2

USING THE PRODUCT

Unplug the device from the electricity and give the device 10seconds to boot up. You are now able to call the device, device itself will pick up the sound and you will hear from **5-10 range in what is going**.

STEP 3

CALL BACK ACTIVATION

The callback function can be **activated by „1111“** and **deactivated „0000“**

TECHNICAL SPECIFICATION

	<u>STANDBY DAYS</u>		<u>CALLBACK DAYS</u>		<u>INCALL HOURS</u>	
	<u>MAX</u>	<u>MIN</u>	<u>MAX</u>	<u>MIN</u>	<u>MAX</u>	<u>MIN</u>
LOGLIVE 10	15.6	10.4	1.6	1.0	5.8	5.0
LOGLIVE 20	25.0	16.7	2.5	1.7	9.2	8.0
LOGLIVE 30	37.5	25.0	3.8	2.5	13.8	12.0
LOGLIVE 40	50.0	33.3	5.0	3.3	18.5	16.0
LOGLIVE 60	75.0	50.0	7.5	5.0	24-17	24.0

Operational frequency: 850MHz, 900MHz, 1800MHz, 1900MHz

PACKAGE CONTENT

1. The LongLife module
2. Battery charger
3. Cable
4. 3M Sticker for easier placement

USEFUL INFORMATION

If battery is fully discharged, charging will start 3 min after connecting the device into power supply.

We recommend to format battery before you start using the device. Charge the device at least 10 hours and then let it discharged. Repeat three times. After device will be fully formatted, charge it for 8 hours, ideally.

Please note, **quality of mobile signal in the place of installation strongly affects quality of interception**

When device is not rechargeable, re-insert SIM card or re-charge the device

When call back function doesn't work properly, even if activated, re-insert SIM card

DISCLAIMER

This user manual can be slightly different from specific product.

Before start using the device, check your local legal terms. Neither supplier nor distributor don't assume and responsibility for using device in conflict with local law.